




# Sliding door KRONE




Combines indoors and outdoors  
- in an elegant solution

 **Energy Class:**  
A

 **U-value for the entire sliding door:**  
0,65-0,8 W/m<sup>2</sup> K

 **Materials:**  
Wood/aluminium, pine wood,  
hard wood

 **E<sub>d</sub>:**  
+5,8 kWh/m<sup>2</sup>

## // ELEGANT DESIGN

The sliding door features a minimalist design. Flush pull handle and slim profiles.

## // LEVEL-FREE ACCESS

The low bottom step provides easy access through the sliding door and the combination of aluminium and composite materials provides a strong and cold-resistant product.

## // 2- AND 3-PANEL MODELS

The sliding door is available with one or two moveable panels.

## // LARGE INFLOW OF LIGHT

The sliding door features narrow frames and the slanted frame structure provides an impressive inflow of light.

## // EASY MAINTENANCE

If you choose the outer part in aluminium you are ensured minimal maintenance.

## // POSITIVE ENERGY BALANCE

Triple-glazed super low-energy glass means that, when seen throughout the year, the sliding door lets in more heat than it gives off.

## // CHILD PROTECTION

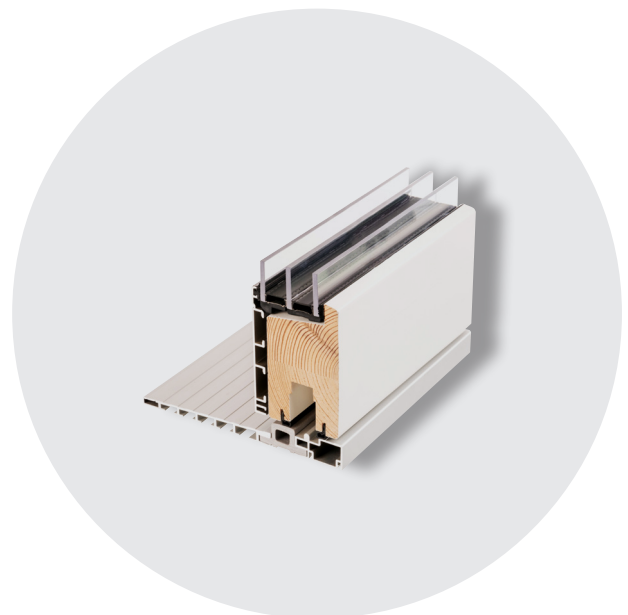
As the rest of our assortment we offer our sliding door with child-protection.

## // ANTI-THEFT PROTECTION

The sliding door is as good as impossible to break open, as it is closed by means of 2 12-mm steel bolts with a pull-out force of 800 kg each.

## // CHOICE OF MATERIAL

The sliding door is available in a variety of material combinations, for instance a moving part made of hard wood combined with fixed parts made of aluminium. An exclusive and elegant choice for the quality conscious customer.



# Sliding door KRONE

Reference pictures



SLIDING DOOR // WOOD/ALUMINIUM



SLIDING DOOR // 3-PANELS WOOD/ALUMINIUM



SLIDING DOOR // 3-PANELS WOOD/ALUMINIUM



SLIDING DOOR // OAK



SLIDING DOOR // 3-PANELS WOOD/ALUMINIUM